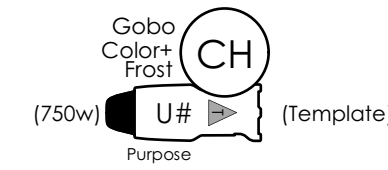


KEY

- ETC S4 14° 750w
- ETC S4 19° 750w
- ETC S4 26° 750w
- ETC S4 36° 750w
- ETC S4 50° 750w
- PAR 64 VN5P 1000w
- PAR 64 NSP 1000w
- PAR 64 MFL 1000w
- PAR 64 WFL 1000w
- Align 13 Ground Cyc (Floor Mounted)
- Elation Artiste Davinci
- Rosco I-Cue
- DMX Iris

TYPICAL (1/2")



REVISION

- Pre. 3/1/22: Prelim Plans
 1. 3/11/22: Finals
 2.
 3.
 4.
 5.

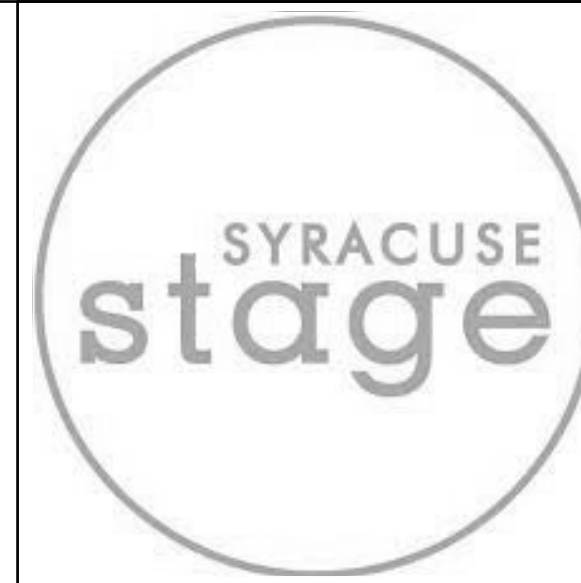
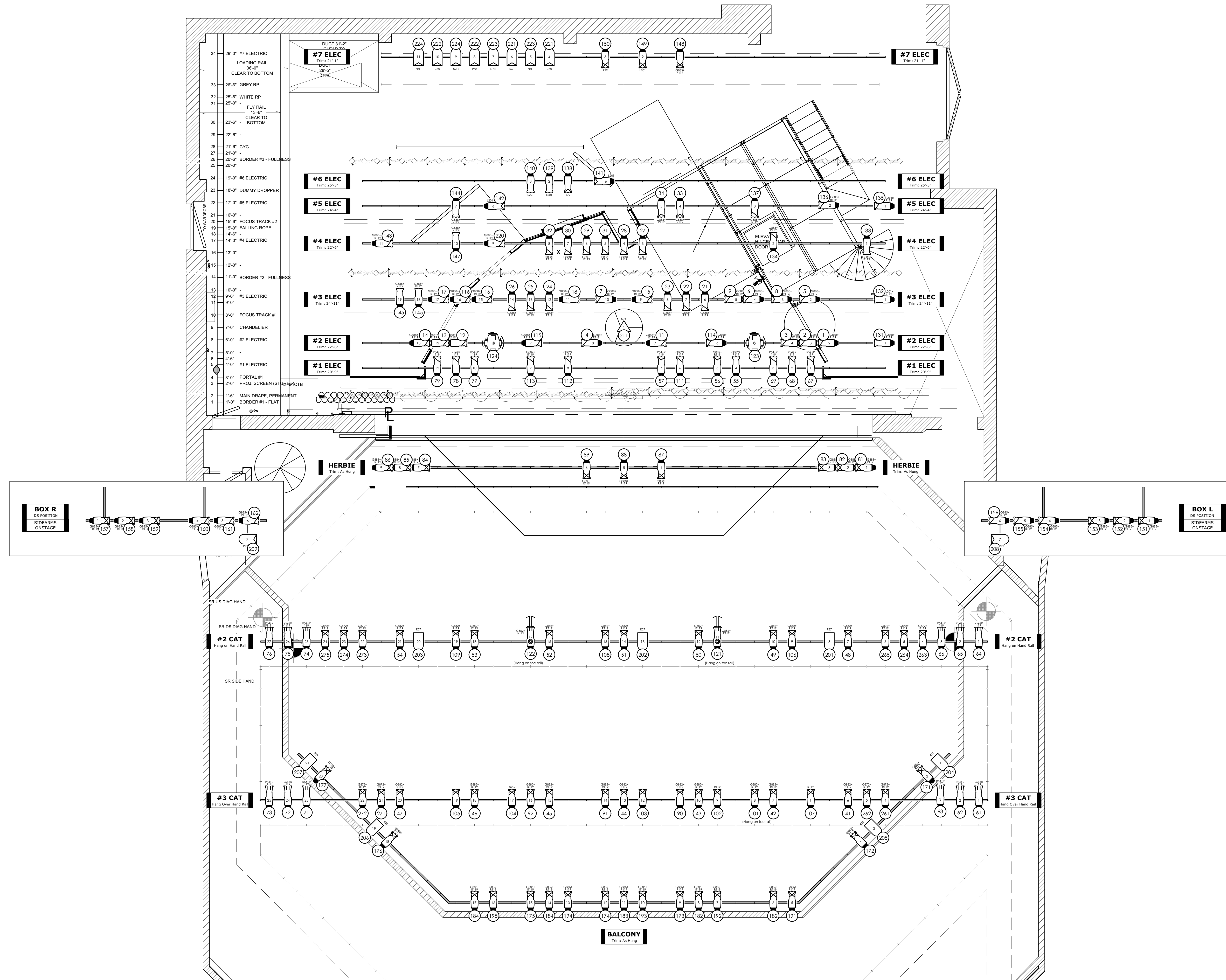
NOTES

1. Tick marks indicate 1'-6" spacing.
2. All measurements are to the center of the light. Hang all sidearms as needed.
3. FOH Box Booms are in DS pipe position. Sidearms are preferred.
4. Scenic ground plan is included for reference only. Reference current scenic drawings for all scenery information.
5. Trim heights are to the bottom of the pipe.
6. Please have R132, R119, Barn Doors, Top Hats, Blackwrap, and Donuts available at focus.
7. If top hats are commonly used for FOH positions, please drop prior to focus.
8. Please drop all color & templates prior to focus.
9. Hang FOH #2 Cat under Hand Rail (except I-Cues).
10. Hang FOH #3 Cat over Hand Rail.
11. Hang Balcony Rail below unless that's not how you usually do it.

This is a representation of design concepts only. Matthew Webb (LIGHTING DESIGNER) takes no responsibility and herewith disclaims liability for any injury resulting from the implementation of these concepts. All work indicated by this drawing must be done in compliance with all applicable federal, state and local fire, safety and electrical codes.

The LIGHTING DESIGNER and their staff are responsible for visual design of the lighting only and are not responsible for structural or electrical accidents resulting in injury or damage.

All concepts, ideas, and design elements shown on this drawing and all other documentation or related materials are the property of the LIGHTING DESIGNER and may only be used for this production. The resultant design may not be reproduced without written approval by LIGHTING DESIGNER.



SYRACUSE STAGE

Robert M. Hupp,
 Artistic Director
 Jill A. Anderson,
 Managing Director



THE PLAY THAT GOES WRONG

by Henry Lewis,
 Jonathan Sayer, &
 Henry Shields

Directed by
 Robert Hupp

Lighting Design by
 Matt Webb

mwebbld@gmail.com
 (501) 454-9322

Director of Production Operations:
 Don Buschmann

Scenic Designer:
 Czerlon Lim

Lighting & Projection Supervisor:
 David Bowman

Production Stage Manager:
 Stuart Plymnesser

Technical Director:
 Randall Steffen

DRAWN BY:
 Matt Webb - mwebbld@gmail.com

SCALE: 1/4" = 1'-0"

PAPER: ARCH D

DATE: 3/11/2022
 REVISION: 1

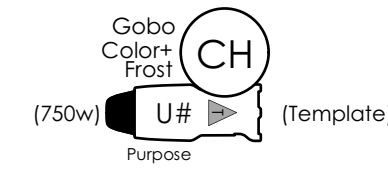
LIGHTING PLOT

SHEET: 1 OF 2

KEY

- ETC S4 14° 750w
- ETC S4 19° 750w
- ETC S4 26° 750w
- ETC S4 36° 750w
- ETC S4 50° 750w
- PAR 64 VNSP 1000w
- PAR 64 NSP 1000w
- PAR 64 MFL 1000w
- PAR 64 WFL 1000w
- Aluminum T3 Ground Cyc (Floor Mounted)
- Elation Artiste Davinci
- Rosco I-Cue
- DMX Iris

TYPICAL (1/2")



REVISION

- Pre. 3/1/22: Prelim Plans
 1. 3/11/22: Finals
 2.
 3.
 4.
 5.

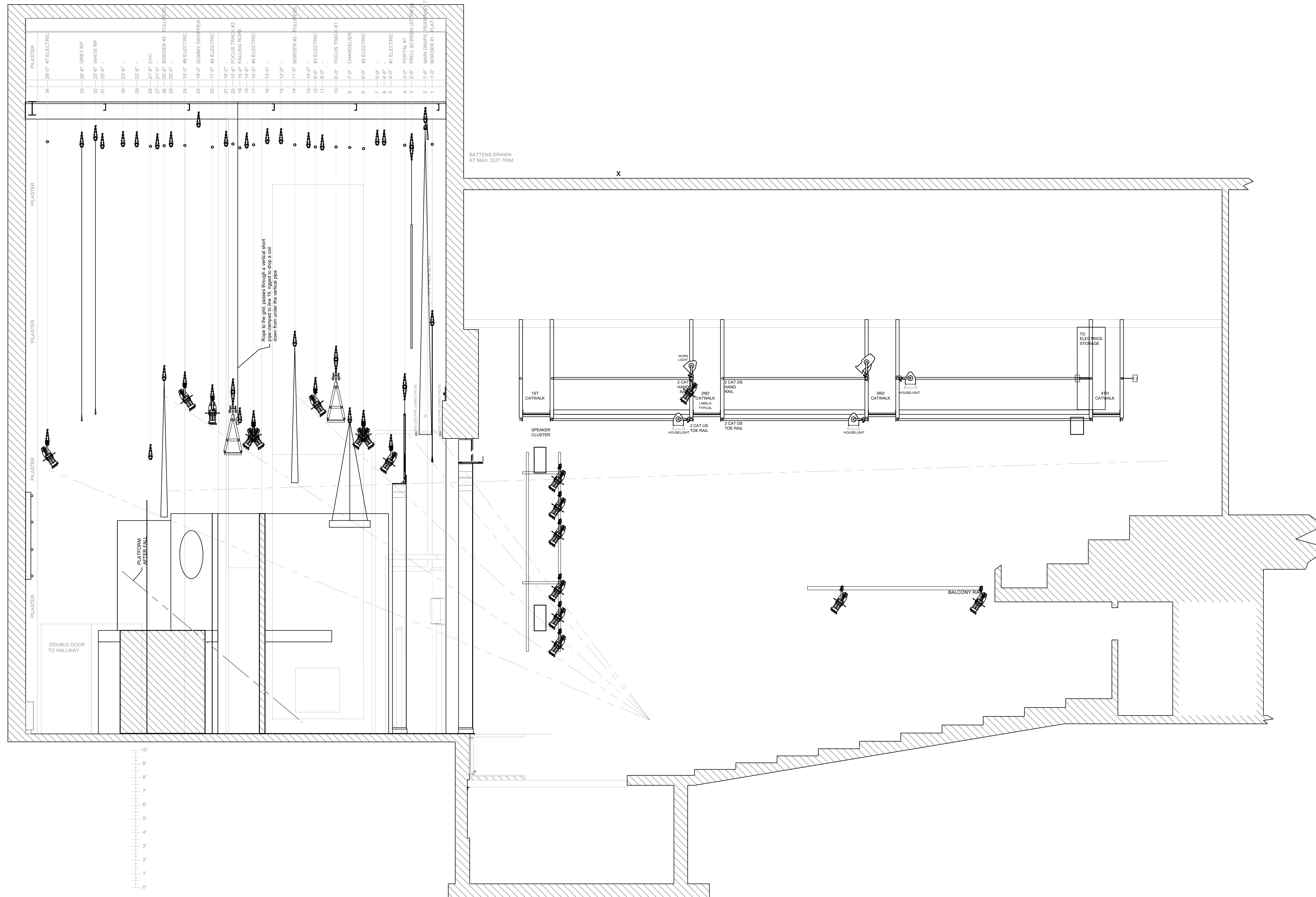
NOTES

1. Tick marks indicate 1'-6" spacing.
2. All measurements are to the center of the light. Hang all sidearms as needed.
3. FOH Box Booms are in DS pipe position. Sidearms are preferred.
4. Scenic ground plan is included for reference only. Referene current scenic drawings for all scenery information.
5. Trim heights are to the bottom of the pipe.
6. Please have R132, R119, Barn Doors, Top Hats, Blackwrap, and Donuts available at focus.
7. If top hats are commonly used for FOH positions, please drop prior to focus.
8. Please drop all color prior to focus.
9. Hang FOH #2 Cat under Hand Rail (except I-Cues).
10. Hang FOH #3 Cat over Hand Rail.
11. Hang Balcony Rail below unless that's not how you usually do it.

This is a representation of design concepts only. Matthew Webb (LIGHTING DESIGNER) takes no responsibility and herewith disclaims liability for any injury resulting from the implementation of these concepts. All work indicated by this drawing must be done in compliance with all applicable federal, state and local fire, safety and electrical codes.

The LIGHTING DESIGNER and their staff are responsible for visual design of the lighting only and are not responsible for structural or electrical accidents resulting in injury or damage.

All concepts, ideas, and design elements shown on this drawing and all other documentation or related materials are the property of LIGHTING DESIGNER and may only be used for this production. The resultant design may not be reproduced without written approval by LIGHTING DESIGNER.



SYRACUSE STAGE

Robert M. Hupp,
 Artistic Director
 Jill A. Anderson,
 Managing Director



THE PLAY THAT GOES WRONG

by Henry Lewis,
 Jonathan Sayer, &
 Henry Shields

Directed by
 Robert Hupp

Lighting Design by
 Matt Webb

mwebbld@gmail.com
 (501) 454-9322

Director of Production Operations:
 Don Buschmann

Scenic Designer:
 Czertan Lim

Lighting & Projection Supervisor:
 David Bowman

Production Stage Manager:
 Stuart Plymnesser

Technical Director:
 Randall Steffen

DRAWN BY:
 Matt Webb - mwebbld@gmail.com

SCALE: 1/4" = 1'-0"

PAPER: ARCH D

DATE: 3/11/2022
 REVISION: 1

LIGHTING SECTION

SHEET: 2 OF 2