

TRIM	NAME	DIST. US
+24"	SR TORM LADDERS	48 32'-7"
+20"	#7A ELECTRIC	46 31'-4"
+24"	SL TORM LADDERS	45 30'-3"
	Back Wall	43 29'-4"
	#7 ELECTRIC	41 28'-0"
+24"	#5A ELECTRIC	40 27'-2"
	Parlat	38 26'-0"
	Black Border	37 25'-4"
	American Flag	36 24'-9"
	Chandelier	34 23'-4"
		32 22'-4"
+24"	#5B ELECTRIC	31 21'-4"
+24"	#5A ELECTRIC	30 20'-8"
		29 20'-0"
	Laundry	28 19'-11"
	Black Border	27 18'-5"
	Atlantic City Sign	26 17'-9"
	Clock	25 17'-4"
	Show Work Lights (14")	24 16'-0"
	RP Storage	23 15'-0"
	Black Border	22 13'-4"
	Traveler Curtain	21 14'-9"
		20 14'-0"
	Truss	19 13'-4"
		18 12'-10"
+24"	#4 ELECTRIC	17 12'-0"
+24"	#3 ELECTRIC	15 10'-0"
	Fanlights	13 9'-3"
	Carnival Lights Sign	12 8'-8"
	Swing Truss & Snow	11 8'-0"
	Swing Control Line	10 7'-3"
	Show Work Lights (14")	9 6'-8"
		8 6'-0"
	Black Border	7 5'-4"
+24"	#2 ELECTRIC	6 4'-8"
+24"	#1 ELECTRIC	5 3'-3"
	Black Bords	4 2'-8"
	House Pictal w/ Screen	3 1'-8"
	Black Border	1 1'-0"

KEY	
	ETC S4 10' 575W
	ETC S4 14' 575W
	ETC S4 19' 575W
	ETC S4 26' 575W
	ETC S4 36' 575W
	ETC S4 50' 575W
	ETC S4 70' 750W
	ETC LUSTR 19' 171W
	ETC LUSTR 26' 171W
	ETC LUSTR 36' 171W
	ETC LUSTR 50' 171W
	ETC S4 SEACHANGER 19' 750W
	ETC S4 SEACHANGER 26' 750W
	ETC S4 SEACHANGER 36' 750W
	ETC S4 PAR MFL 750W
	PAR 64 VN5P 1000W
	PAR 64 NSF 1000W
	PAR 64 WFL 1000W
	6' FRESNEL 750W
	3' INKY FRESNEL 100W
	PRACTICAL, VARIOUS
	PRACTICAL, JELLY JAR A19 CLEAR 100W
	Vari-Lite VL1000 A18 1000W
	ETC REVOLUTION SHUT/GOBO 750W
	MAC VIPER PERFORMANCE 1000W
	COLOR FORCE F2 660W
	HES F-100 FOGGER

TYPICAL	
TEMPLATE UNIT # 11	CHANNEL

- NOTES/REVISIONS**
- SEE POSITION NOTES FOR SPECIFIC INFORMATION. DISCUSS AS NECESSARY. FOH DRAWN OUT OF POSITION FOR CLARITY.
 - THERE ARE SLIGHT LINESHIFT DISCREPANCIES BETWEEN SCENE AND LIGHTING DRAWINGS. CENTER ALL FIXES PRIOR TO HANG.
 - PLEASE HAVE R13, R10, BLACKWRAP, BLACKTAK, AND DONUTS AVAILABLE AT FOCUS.
 - REFE TO HOOKUP FOR COLOR, TEMPLATE AND PURPOSE INFO. PLEASE DROP ALL COLOR & PATTERNS PRIOR TO FOCUS.
 - PRACTICALS & DECK MOUNTS ARE NOT INCLUDED. SEE PLATE #2 FOR MORE INFORMATION.

THESE DRAWINGS REPRESENT VISUAL CONCEPTS AND INSTALLATION SUGGESTIONS ONLY. THE DESIGNER IS UNQUALIFIED TO DETERMINE STRUCTURAL APPROPRIATENESS OF THIS DESIGN AND WILL NOT ASSUME RESPONSIBILITY FOR IMPROPER ENGINEERING, INSTALLATION, HANDLING, OR USE OF THIS DESIGN. ALL MATERIALS & CONSTRUCTION MUST COMPLY WITH THE MOST STRINGENT APPLICABLE FEDERAL AND LOCAL FIRE AND SAFETY CODES.

LIGHTING DESIGN BY:
DUANE SCHULER
 DHSCHULER@ME.COM
 (917) 887-3834

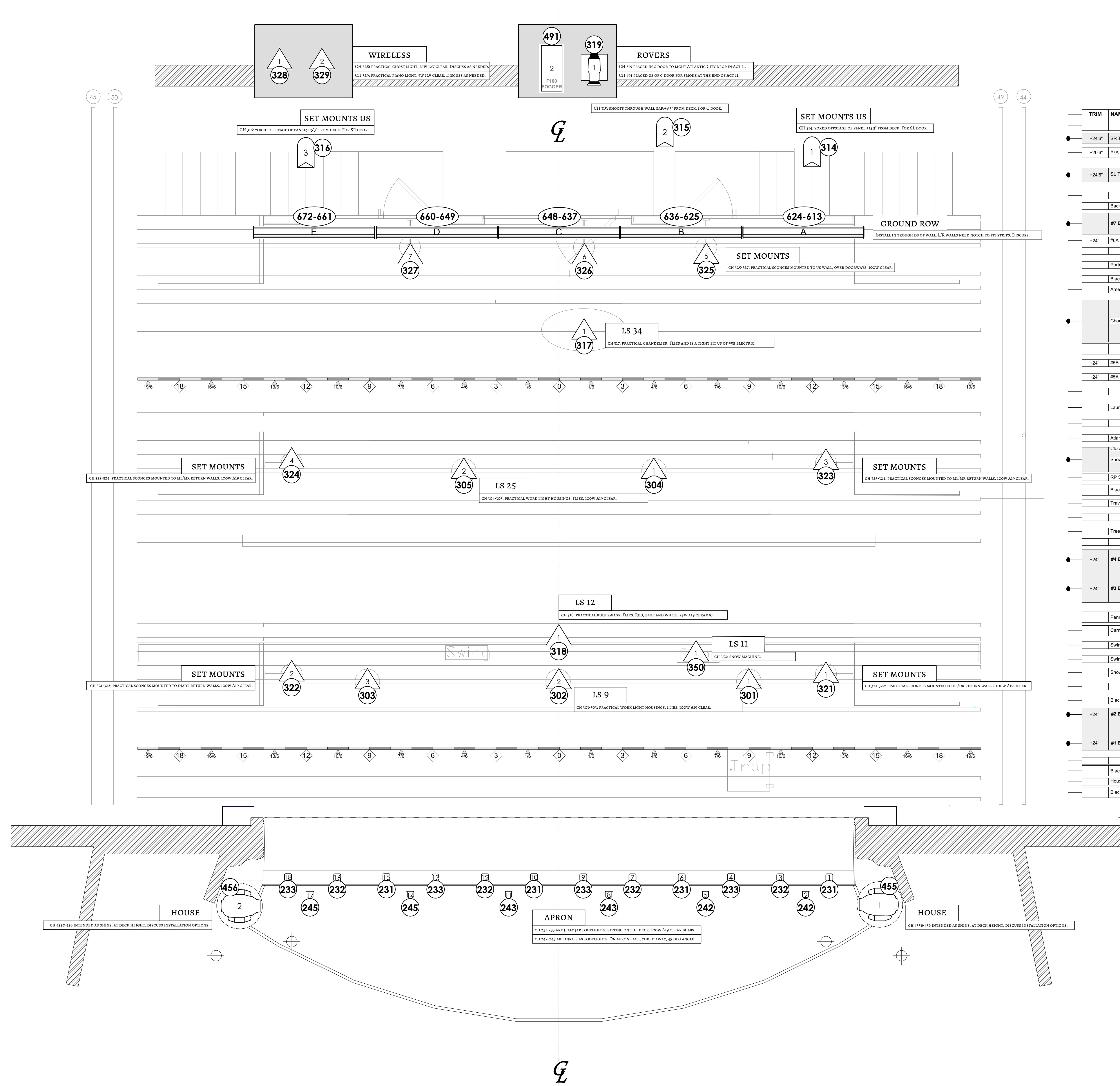
ASSISTANT DESIGN BY:
 MATTHEW WEBB
 MWWEBB@GMAIL.COM • (501) 654-9322

ASOLO REPERTORY THEATRE
 MICHAEL D. EDWARDS, PRODUCING ARTISTIC DIRECTOR
 METZ THEATRE
 655 N. TAMiami Tr. | SARASOTA, FLORIDA

RAGTIME
 B. T. McNALLY; M. S. FLAHERTY; L. L. AHRENS
 DIRECTOR: PETER ROTHSTEIN
 SET DESIGNER: MICHAEL HOOVER
 TECH DIRECTOR: DAVID FERGUSON
 MASTER ELECTRICIAN: ETHAN VAIL
 DESIGN ASSISTANT: MATTHEW WEBB

LIGHT PLOT 1/2"
 SCALE: 1/2" = 1'-0"
 PAPER SIZE: ARCH E
 DRAWN BY: MW
 REVISION: 3
 DATE: 4/15/2018

SHEET:
01
 OF 4



TRIM	NAME	DIST	US
		48	32'-7"
+24"	SR TORM LADDERS	47	31'-4"
+20"	#7A ELECTRIC	46	31'-4"
+24"	SL TORM LADDERS	46	30'-3"
		43	29'-4"
	Back Wall	42	28'-10"
		41	28'-0"
#7 ELECTRIC		41	28'-0"
+2"	#8A ELECTRIC	40	27'-2"
		39	26'-8"
	Portrait	38	26'-0"
	Black Border	37	25'-4"
	American Flag	36	24'-9"
		34	23'-4"
Chandelier		34	23'-4"
		32	22'-4"
+2"	#8B ELECTRIC	31	21'-4"
+2"	#8A ELECTRIC	30	20'-8"
		29	20'-0"
	Laundry	28	19'-11"
		27	18'-5"
	Atlantic City Drop	26	17'-9"
	Chick	25	17'-0"
	Show Work Lights (14")	24	16'-9"
	RP Storage	23	16'-0"
	Black Border	22	15'-4"
	Traveler Curtain	21	14'-9"
		20	14'-0"
	Tree	19	13'-4"
		18	12'-10"
+2"	#4 ELECTRIC	17	12'-0"
+2"	#3 ELECTRIC	15	10'-9"
		13	9'-3"
	Carnival Lights Swap	12	8'-8"
	Swing Truss & Snow	11	8'-0"
	Swing Control Line	10	7'-3"
	Show Work Lights (14")	9	6'-8"
		8	6'-0"
	Black Border	7	5'-4"
+2"	#2 ELECTRIC	6	4'-8"
+2"	#1 ELECTRIC	5	3'-3"
		4	2'-8"
	Black Screen	3	2'-0"
	House Portal w/ Screen	2	1'-8"
	Black Border	1	1'-0"

KEY

- ETC S4 10" 575W
- ETC S4 14" 575W
- ETC S4 19" 575W
- ETC S4 26" 575W
- ETC S4 36" 575W
- ETC S4 50" 575W
- ETC S4 70" 750W
- ETC LUSTR 19" 171W
- ETC LUSTR 26" 171W
- ETC LUSTR 36" 171W
- ETC LUSTR 50" 171W
- ETC S4 SEACHANGER 19" 750W
- ETC S4 SEACHANGER 26" 750W
- ETC S4 SEACHANGER 36" 750W
- ETC S4 PAR MFL 750W
- PAR 64 VN5P 1000W
- PAR 64 NSP 1000W
- PAR 64 WFL 1000W
- 6" FRESNEL 750W
- 3" INKY FRESNEL 100W
- PRACTICAL VARIOUS
- PRACTICAL, JELLY JAR A19 CLEAR 100W
- VARI-LITE VL100 AS 1000W
- ETC REVOLUTION SHUT/GOBO 750W
- MAC VIPER PERFORMANCE 1000W
- COLOR FORCE 72 660W
- HES F-100 FOGGER

TYPICAL

TEMPLATE UNIT # 1 CHANNEL

NOTES/REVISIONS

- SEE POSITION NOTES FOR SPECIFIC INFORMATION. DISCUSS AS NECESSARY.
- THERE ARE SLIGHT INSET DISCREPANCIES BETWEEN SCENE AND LIGHTING PRACTICES. CONFIRM ALL ISSUES PRIOR TO HANG.
- US SET-MOUNTED PARTS TBA BASED ON SCENERY INSTALL AND BUILDING ARCHITECTURE. ILL PLACE ON SITE.
- REFER TO HOOKUP FOR ADDITIONAL INFORMATION.
- HANG PLOT OF LIGHTING POSITIONS NOT INCLUDED FOR CLARITY. SEE PLATE #1 FOR MORE INFORMATION.

REVISION 2: 3/6/2018

THESE DRAWINGS REPRESENT VISUAL CONCEPTS AND INSTALLATION SUGGESTIONS ONLY. THE DESIGNER IS UNQUALIFIED TO DETERMINE STRUCTURAL APPROPRIATENESS OF THIS DESIGN AND WILL NOT ASSUME RESPONSIBILITY FOR IMPROPER ENGINEERING, INSTALLATION, HANDLING, OR USE OF THIS DESIGN. ALL MATERIALS & CONSTRUCTION MUST COMPLY WITH THE MOST STRINGENT APPLICABLE FEDERAL AND LOCAL FIRE AND SAFETY CODES.

LIGHTING DESIGN BY:
DUANE SCHULER
 DHSCHULER@ME.COM
 (917) 887-3834

ASSISTANT DESIGN BY:
 MATTHEW WEBB
 MWEBB@GMAIL.COM • (501) 454-9322

ASOLO REPERTORY THEATRE
 MICHAEL D. EDWARDS, PRODUCING ARTISTIC DIRECTOR
 METZ THEATRE
 555 N. TAMiami Tr. | SARASOTA, FLORIDA

RAGTIME
 THE MUSICAL

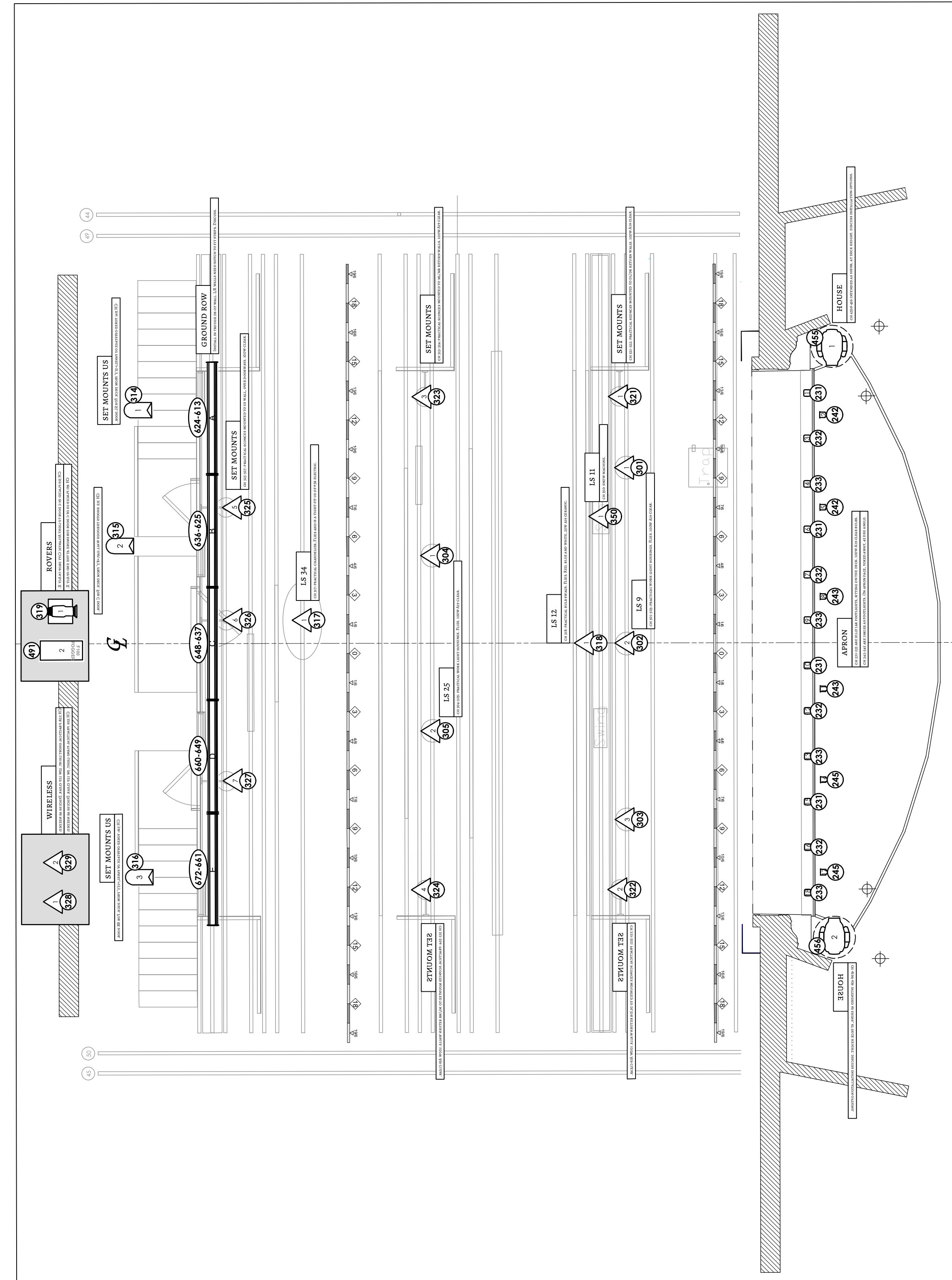
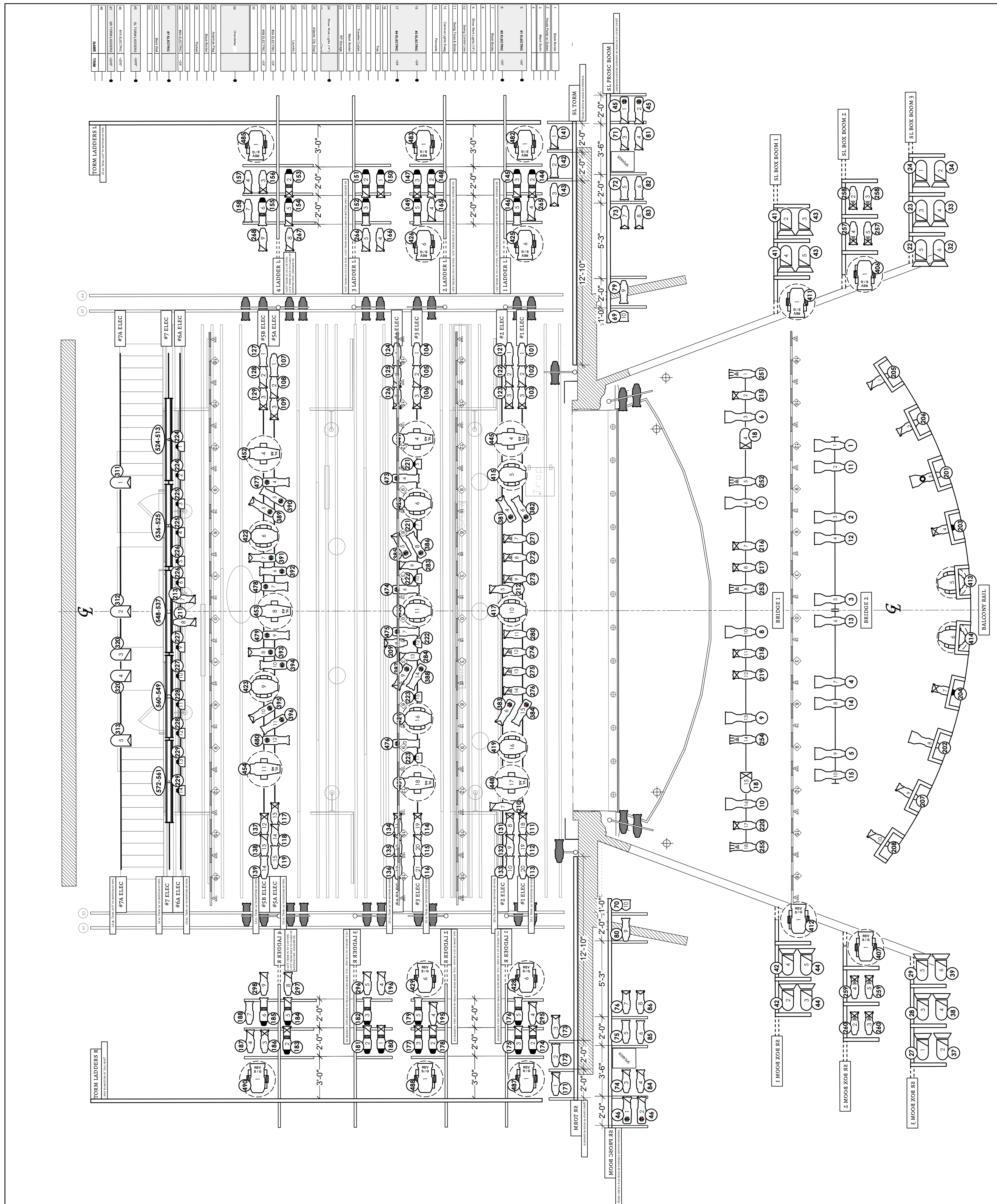
RAGTIME
 B. T. McNALLY; M. S. FLAHERTY; L. L. AHRENS

DIRECTOR: PETER ROTHSTEIN
 SET DESIGNER: MICHAEL HOOVER
 TECH DIRECTOR: DAVID FERGUSON
 MASTER ELECTRICIAN: ETHAN VAIL
 DESIGN ASSISTANT: MATTHEW WEBB

DECK PLOT 1/2"

SCALE: 1/2" = 1'-0"
 PAPER SIZE: ARCH E
 DRAWN BY: ANW
 REVISION: 18
 DATE: 3/27/2018

SHEET:
02
 OF 4



KEY

	ETC S4 107 750W
	ETC S4 147 750W
	ETC S4 197 750W
	ETC S4 247 750W
	ETC S4 297 750W
	ETC S4 347 750W
	ETC S4 397 750W
	ETC S4 447 750W
	ETC S4 497 750W
	ETC S4 547 750W
	ETC S4 597 750W
	ETC S4 647 750W
	ETC S4 697 750W
	ETC S4 747 750W
	ETC S4 797 750W
	ETC S4 847 750W
	ETC S4 897 750W
	ETC S4 947 750W
	ETC S4 997 750W
	PAR 64 100P 1000W
	PAR 64 NSP 1000W
	PAR 64 WFL 1000W
	4\"/>
	7\"/>
	PRACTICAL VANDER
	PRACTICAL TELLY 3A AIR CLEAR 100W
	VARI-LITE VLS100 AS 1000W
	ETC REVOLUTION SHOTGUN 250W
	MAC VITER PERFORMANCE 1000W
	COLOR FORCE 71 600W
	HES F 100 FOGGER

TYPICAL

	TEMPLATE UNIT 11
	CHANNEL

- NOTES**
- SEE POSITION NOTES FOR SPECIFIC INFORMATION. DISCUSS AS NECESSARY. FOH DRAW OUT OF POSITION FOR CLARITY.
 - THERE ARE SLIGHT LINES/ETC DISCREPANCIES BETWEEN SCENIC AND LIGHTING DRAFTINGS. CONFIRM ALL ISSUES PRIOR TO HANG.
 - PLEASE HAVE RIG, RIG, BLACKWRAP, BLACKTAK, AND DONUTS AVAILABLE AT FOCUS.
 - REFER TO HOOKUP FOR COLOR, TEMPLATE AND PURPOSE INFO. PLEASE DROP ALL COLOR AND PATTERNS PRIOR TO FOCUS.
 - US SET-MOUNTED PARS TO BE INSTALLED ON SCENERY INSTALL AND BUILDING ARCHITECTURE. I'LL PLACE ON SITE.

REVISION 28: 3/27/2018

THESE DRAWINGS REPRESENT VISUAL CONCEPTS AND INSTALLATION SUGGESTIONS ONLY. THE DESIGNER IS NOT RESPONSIBLE FOR THE PROPER INSTALLATION, HANDLING, OR USE OF THIS DESIGN.

ALL MATERIALS + CONSTRUCTION MUST COMPLY WITH THE MOST STRINGENT APPLICABLE FEDERAL AND LOCAL THEATRE AND SAFETY CODES.

LIGHTING DESIGN BY:
DUANE SCHULER
 DHSCHULER@ME.COM
 (917) 887-3834

ASSISTANT DESIGN BY:
 MATTHEW WEBB
 MWEBB@GMAIL.COM • (501) 454-9322

ASOLO REPERTORY THEATRE
 MICHAEL D. EDWARDS, PRODUCING ARTISTIC DIRECTOR

MERTZ THEATRE
 5555 N. TAMPAKI TR. | SARASOTA, FLORIDA

RAGTIME
 THE MUSICAL

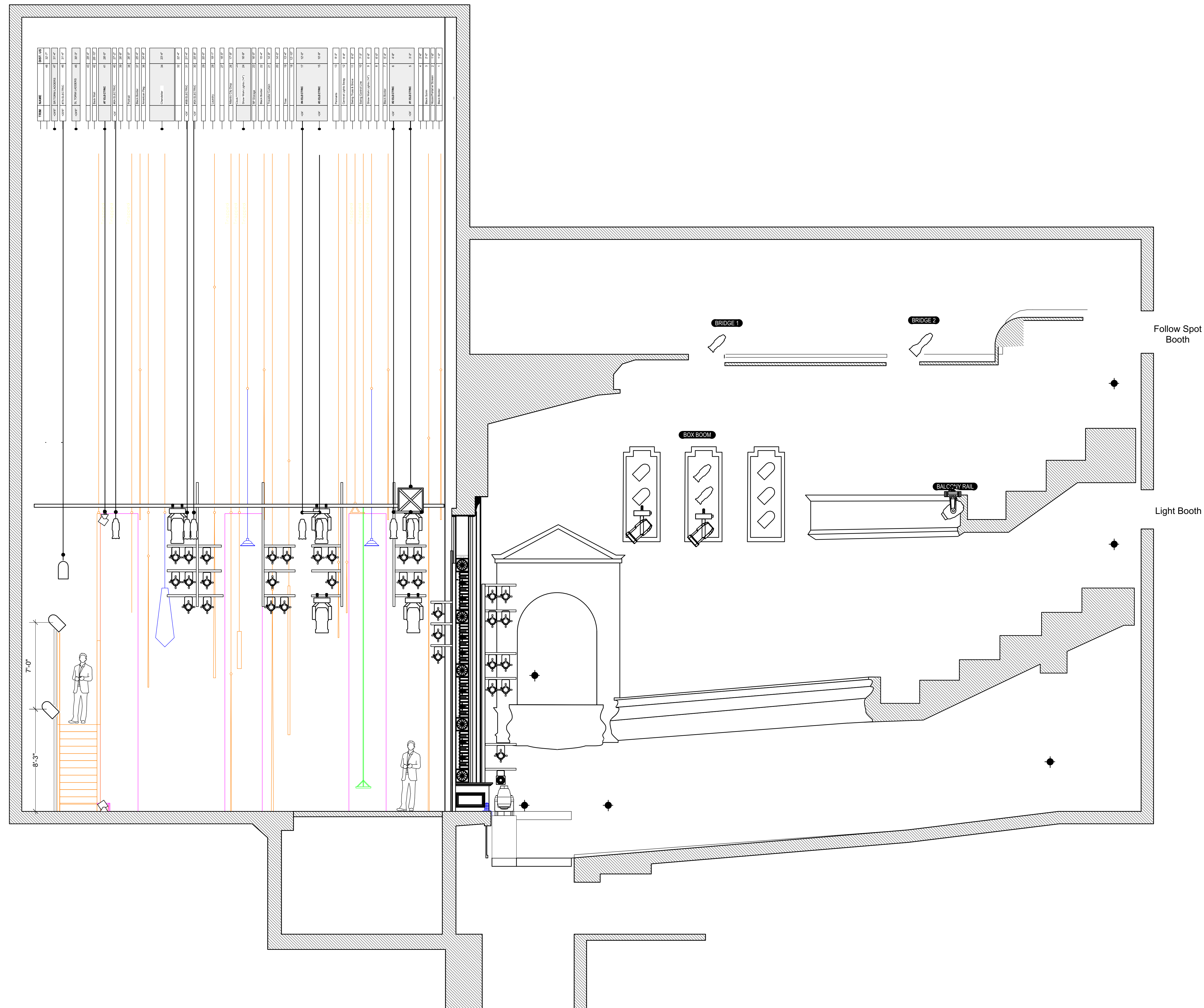
RAGTIME
 B: T. McNALLY; M: S. FLAHERTY; L: L. AHRENS

DIRECTOR: PETER ROTHSTEIN
 SET DESIGNER: MICHAEL HOOVER
 TECH DIRECTOR: DAVID FERGUSON
 MASTER ELECTRICIAN: ETHAN VAIL
 DESIGN ASSISTANT: MATTHEW WEBB

FULL PLOT 1/4"

SCALE: 1/4" = 1'-0"
 PAPER SIZE: ARCH D
 DRAWN BY: MW
 REVISION: 28
 DATE: 3/27/2018

SHEET:
03
 OF 4



KEY

- ETC S4 10' 250W
- ETC S4 14' 250W
- ETC S4 17' 250W
- ETC S4 20' 250W
- ETC S4 25' 250W
- ETC S4 30' 250W
- ETC Luster 10' 120W
- ETC Luster 16' 120W
- ETC Luster 30' 120W
- ETC Luster 50' 120W
- ETC S4 SEARCHER 10' 250W
- ETC S4 SEARCHER 20' 250W
- ETC S4 SEARCHER 30' 250W
- ETC S4 PAR MFL 250W
- PAR 64 TNSP 1000W
- PAR 64 NSP 1000W
- PAR 64 WFL 1000W
- 4' PARSEL 750W
- 7' INVA PARSEL 100W
- PRACTICAL VARIOUS
- PRACTICAL TRAY BAR AIR CLEAR 100W
- VARI-LITE VL1000-AS 1000W
- ETC REVOLUTION SILENT/GONO 750W
- MAC VIKER PERFORMANCE 1000W
- COLOR FORCE 75 1600W
- HER F-100 FOGGER

TYPICAL



NOTES

- 1) SEE POSITION NOTES FOR SPECIFIC INFORMATION. DISCUSS AS NECESSARY. FOH DRAWN OUT OF POSITION FOR CLARITY.
- 2) THERE ARE SLIGHT LINES/ET DISCREPANCIES BETWEEN SCENIC AND LIGHTING DRAFTINGS. CONFIRM ALL ISSUES PRIOR TO HANG.
- 3) SECTION INTENDED MOSTLY FOR LADDER CLARITY AND TRIM HEIGHTS ONLY. PLEASE LET ME KNOW IF YOU COULD USE ADDITIONAL INFO, DIMENSIONS, OR CLARITY ON ANY POSITION.

REVISION 2, 3/6/2018.

THESE DRAWINGS REPRESENT PRELIMINARY CONCEPTS AND INSTALLATION SUGGESTIONS ONLY. THE DESIGNER IS UNQUALIFIED TO DETERMINE STRUCTURAL APPROPRIATENESS OF THIS DESIGN AND WILL NOT ASSUME RESPONSIBILITY FOR IMPROPER ENGINEERING, INSTALLATION, HANDLING, OR USE OF THIS DESIGN.

ALL MATERIALS & CONSTRUCTION MUST COMPLY WITH THE MOST STRINGENT APPLICABLE FEDERAL AND LOCAL FIRE AND SAFETY CODES.

LIGHTING DESIGN BY:
DUANE SCHULER
 DHSCHULER@ME.COM
 (917) 887-3834

ASSISTANT DESIGN BY:
 MATTHEW WEBB
 MWEBB@GMAIL.COM • (501) 454-9332

ASOLO REPERTORY THEATRE
 MICHAEL D. EDWARDS, PRODUCING ARTISTIC DIRECTOR
 MERTZ THEATRE
 5555 N. TAMPAKI TR. | SARASOTA, FLORIDA



RAGTIME
 B: T. McNALLY; M: S. FLAHERTY; L: L. AHNRENS
 DIRECTOR: PETER ROTHSTEIN
 SET DESIGNER: MICHAEL HOOVER
 TECH DIRECTOR: DAVID FERGUSON
 MASTER ELECTRICIAN: ETHAN VAIL
 DESIGN ASSISTANT: MATTHEW WEBB

SECTION 1/4"

SCALE: 1/4" = 1'-0"
 PAPER SIZE: ARCH D
 DRAWN BY: MW
 REVISION: 3
 DATE: 4/15/2018

SHEET:
04
 OF 4